



Built in
Microwave Oven

Island with
Cambria
Countertop



8617 Model number: 8617

3 beds • 2 baths • 1740 sq.ft. • 30' width • 58' depth

Our home building facilities invest in continuous product and process improvements. Plans, dimensions, features, materials, specifications and availability are subject to change without notice or obligation. Renderings and floor plans are representative likenesses of our homes and may differ from the actual homes. We invite you to tour a Home Center near you and inspect the highest value in quality housing available or call (315) 732-6136 to speak with a Home Consultant. Copyright 2017, CMH. All rights reserved.

<https://www.gihomesutica.com>

G & I HOMES-FRANKFORT

2605 ROUTE 5
FRANKFORT, NY 13340

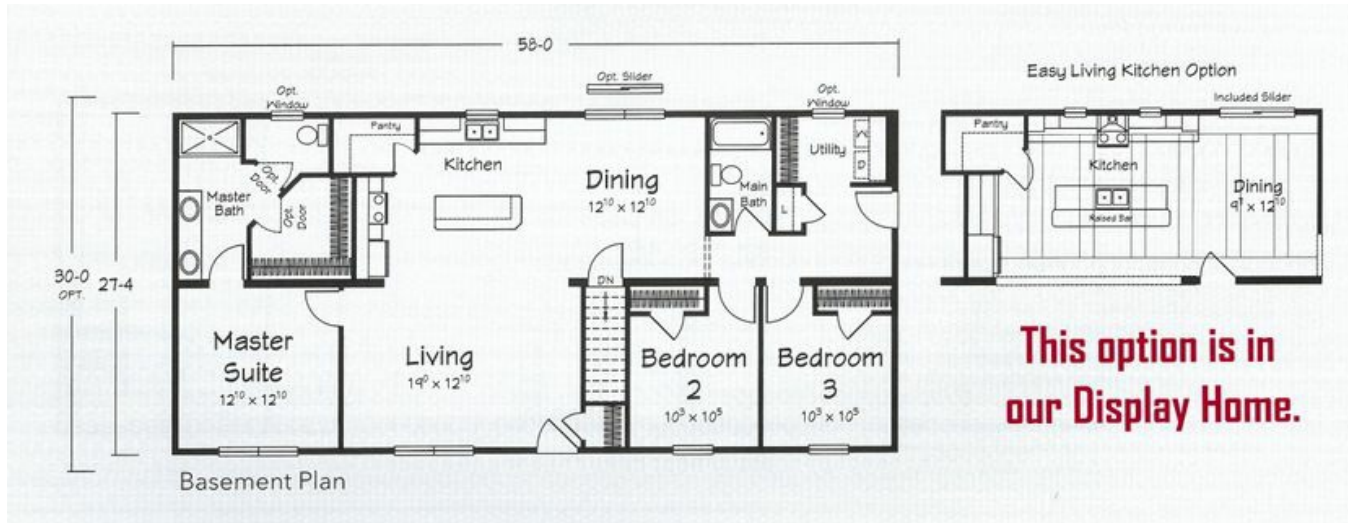
Monday - Thursday: 9am to 6pm

Friday: 9am to 6pm

Saturday: 9am to 5pm

Sunday: Closed

(315) 732-6136



8617 Model number: 8617

3 beds • 2 baths • 1740 sq.ft. • 30' width • 58' depth

Our home building facilities invest in continuous product and process improvements. Plans, dimensions, features, materials, specifications and availability are subject to change without notice or obligation. Renderings and floor plans are representative likenesses of our homes and may differ from the actual homes. We invite you to tour a Home Center near you and inspect the highest value in quality housing available or call (315) 732-6136 to speak with a Home Consultant. Copyright 2017, CMH. All rights reserved.

<https://www.gihomesutica.com>

G & I HOMES-FRANKFORT

2605 ROUTE 5
FRANKFORT, NY 13340

Monday - Thursday: 9am to 6pm
Friday: 9am to 6pm
Saturday: 9am to 5pm
Sunday: Closed

(315) 732-6136