



MARVEL Model number: 21TRU28564AH19

3 beds • 2 baths • 1568 sq.ft. • 28' width • 56' depth

Our home building facilities invest in continuous product and process improvements. Plans, dimensions, features, materials, specifications and availability are subject to change without notice or obligation. Renderings and floor plans are representative likenesses of our homes and may differ from the actual homes. We invite you to tour a Home Center near you and inspect the highest value in quality housing available or call (315) 732-6136 to speak with a Home Consultant. Copyright 2017, CMH. All rights reserved.

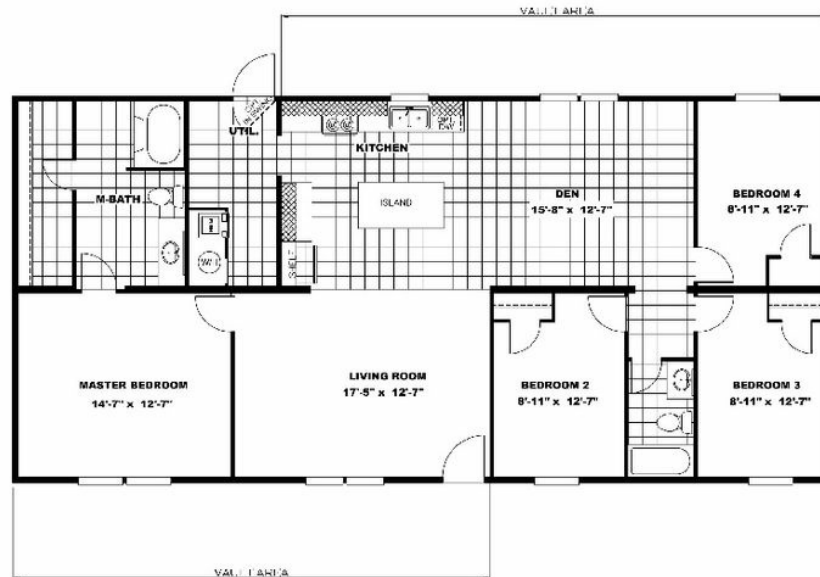
<https://www.gihomesutica.com>

G & I HOMES-FRANKFORT

2605 ROUTE 5
FRANKFORT, NY 13340

Monday - Thursday: 9am to 6pm
Friday: 9am to 6pm
Saturday: 9am to 5pm
Sunday: Closed

(315) 732-6136



MARVEL Model number: 21TRU28564AH19

3 beds • 2 baths • 1568 sq.ft. • 28' width • 56' depth

Our home building facilities invest in continuous product and process improvements. Plans, dimensions, features, materials, specifications and availability are subject to change without notice or obligation. Renderings and floor plans are representative likenesses of our homes and may differ from the actual homes. We invite you to tour a Home Center near you and inspect the highest value in quality housing available or call (315) 732-6136 to speak with a Home Consultant. Copyright 2017, CMH. All rights reserved.

<https://www.gihomesutica.com>

G & I HOMES-FRANKFORT

2605 ROUTE 5
FRANKFORT, NY 13340

Monday - Thursday: 9am to 6pm
Friday: 9am to 6pm
Saturday: 9am to 5pm
Sunday: Closed

(315) 732-6136